

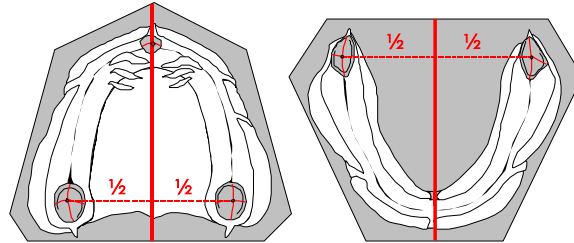
# Total prosthetics in function - TiF®

## Tools

Black pencil; red, green and blue colored pencils; profile compass; triangle; 22.5° angle template  
All lines are drawn on the edges or outer surfaces of the cast.

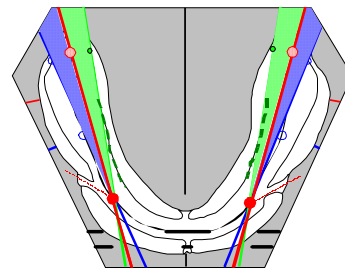
## Anatomic midpoints

- Maxilla: Midpoint of the incisal papilla and the tuberosity
- Mandible: Lingual frenulum (tooth loss patterns can vary widely – so can ridge atrophy. Experience has shown that the position of the lingual frenulum near the anatomic midline of the cast will be less affected than the vestibular frenula) and the midpoints of the retromolar pads



## Mandible – Static lines

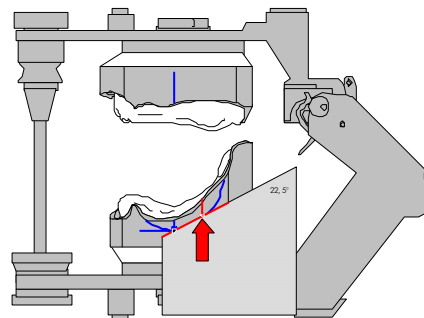
- Midline of the anterior ridge and midline of the vestibular fold, at a right angle to the anatomic midline of the cast
- Basic statics: First premolar positions and centers of the retromolar pads (red)
- Inner correction: First premolar positions and lingual limits of the retromolar pads (green); alternatively, the mylohyoid line may be referred to
- Outer correction: First premolar positions and buccal limits of the retromolar pads (blue)



## Stop line

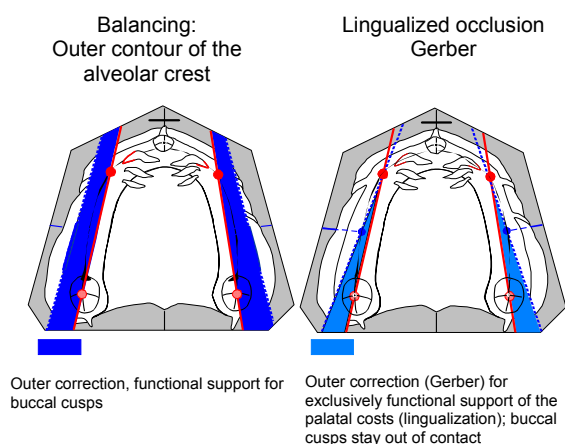
- Parallel to the posterior ridge
- Tangent (parallel to the occlusal plane), vertical marking of the largest masticatory unit and 1-mm tolerance range mesially and distally (blue)

22.5° angle marks and stop line; if atrophy in the dorsal region is so pronounced that no intersection mesially of the retromolar pad can be defined, the set-up ends *before* the pad (red)



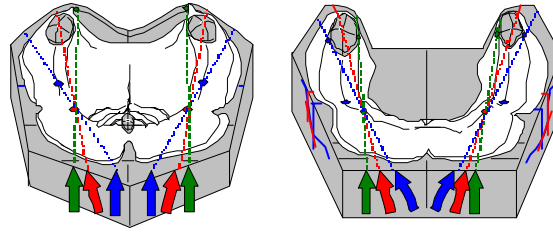
## Maxilla – Static lines

- Center of the incisal papilla, labial limits of the central incisors 7–8 mm, ends of the first large pair of palatine rugae (if available) for the canine position
- Basic statics: Premolar positions and centers of the tuberosities (red)
- Inner correction: Premolar positions and pterygomandibular fold
- Outer correction for balancing: buccal limit of the ridge
- Outer correction for balancing, Gerber: First molar and first premolar positions
- Transferring the market for the largest masticatory unit (first molar)



## Definitive setup lines

- Anterior lines (outer and inner correction and basic statics) will stay as and – especially – where they are



- **dorsal:** the lines closest to the basic statics are applicable for the definitive **inner** and **outer** correction
- **dorsal: definitive set-up line. right side** (alternative: use lower basic statics if indicated due to jaw atrophy)
- **dorsal: definitive set-up line. left side** (alternative: use lower basic statics if indicated due to jaw atrophy)

